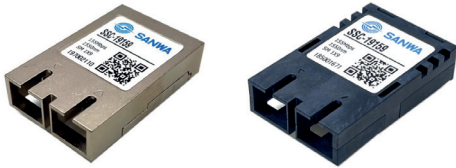




INDUSTRIAL CUSTOM OPTICAL TRANSCEIVER



| | |
|---------------|--|
| Product Name | 1x9 |
| Specification | SMF, SC Connector Operating Temperature -25°C to 87°C |
| Data Rate | 155Mbps |



| | |
|---------------|----------------------------|
| Product Name | SFF |
| Specification | SMF/MMF, LC Connector |
| Data Rate | 155Mbps, 1.25Gbps, 2.5Gbps |



| | |
|---------------|---|
| Product Name | Mini SFF (1x5 Pin) |
| Specification | MMF, FC Connector Operating Temperature 90°C |
| Data Rate | 1.25Gbps |



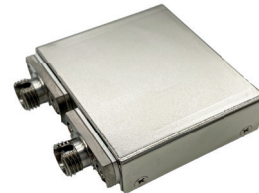
| | |
|---------------|---|
| Product Name | SFP, SFP+ |
| Specification | SMF/MMF, LC Connector CDR Integrated (10G) |
| Data Rate | 155Mbps~10Gbps |



| | |
|---------------|--------------------|
| Product Name | QSFP+ |
| Specification | MMF, MPO Connector |
| Data Rate | 56Gbps |



| | |
|---------------|-------------------------|
| Product Name | Mini FA Transceiver |
| Specification | POF/HPCF, F07 Connector |
| Data Rate | 155Mbps, 1.25Gbps |



| | |
|---------------|---------------------------------------|
| Product Name | Railway Transceiver |
| Specification | MMF, FC Connector High Reliability |
| Data Rate | 155Mbps, 1.25Gbps |



| | |
|---------------|--|
| Product Name | TOSA/ROSA |
| Specification | Made in Japan High Reliability Various types Available |

PIONEERING CUSTOM FIBER OPTIC SOLUTIONS FOR YOUR UNIQUE NEEDS

Toll free number 1-855-SNW-TECH
Please contact your local sales representative for further details or questions.